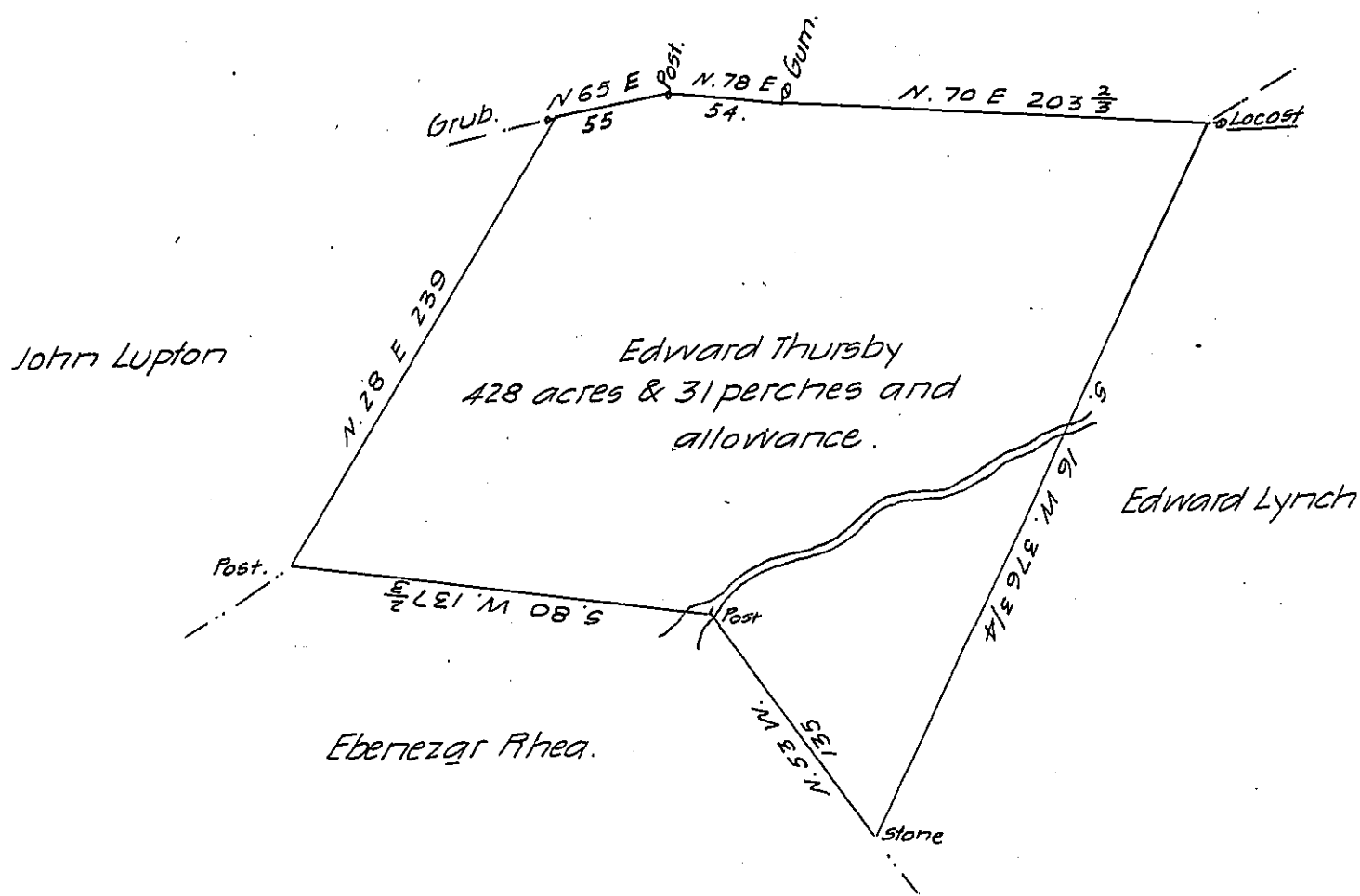


Michael Brubach.



The Draught of a Tract of land situate in Joboyne township Cumberland County containing four hundred & twenty eight acres & 31 perches and allowance of six per cent for roads &c. Surveyed July 31st 1794 in pursuance of a warrant granted to Edward Thursby dated January 28th 1794.

P. Sam'l Lyon D.S.

To Daniel Broadhead Esqr.

Surveyor General of Pennsylvania

IN TESTIMONY that the above is a copy of the original remaining on file in the Department of Internal Affairs of Pennsylvania, made conformably to an Act of Assembly approved the 16th day of February 1833, I have hereunto set my hand and caused the Seal of said Department to be affixed at Harrisburg, this eighth day of May 1907

*Henry Howell*

Secretary of Internal Affairs.